



Mainstreaming Agrobiodiversity for Sustainable Food System in the ASEAN Region

June Cadalig Batang-ay
Tebtebba



Strategic Plan for Biodiversity 2011-2020 (incl. 20 Aichi Targets)

Background





By 2020, the **traditional knowledge, innovations and practices of indigenous and local communities** relevant for the conservation and sustainable use of biodiversity, and their **customary use of biological resources**, are respected, subject to national legislation and relevant international obligations, and fully integrated and reflected in the implementation of the Convention with the **full and effective participation of indigenous and local communities, at all relevant levels.**

Target 20 (GBF Draft 1)

To ensure that relevant knowledge, including ~~traditional~~ **indigenous and local** knowledge, innovations practices of indigenous peoples and local communities with their free, prior and informed consent, guides decision-making for the effective management of biodiversity, enabling monitoring, and by promoting awareness, education and research

Target 21 (GBF Draft 1)



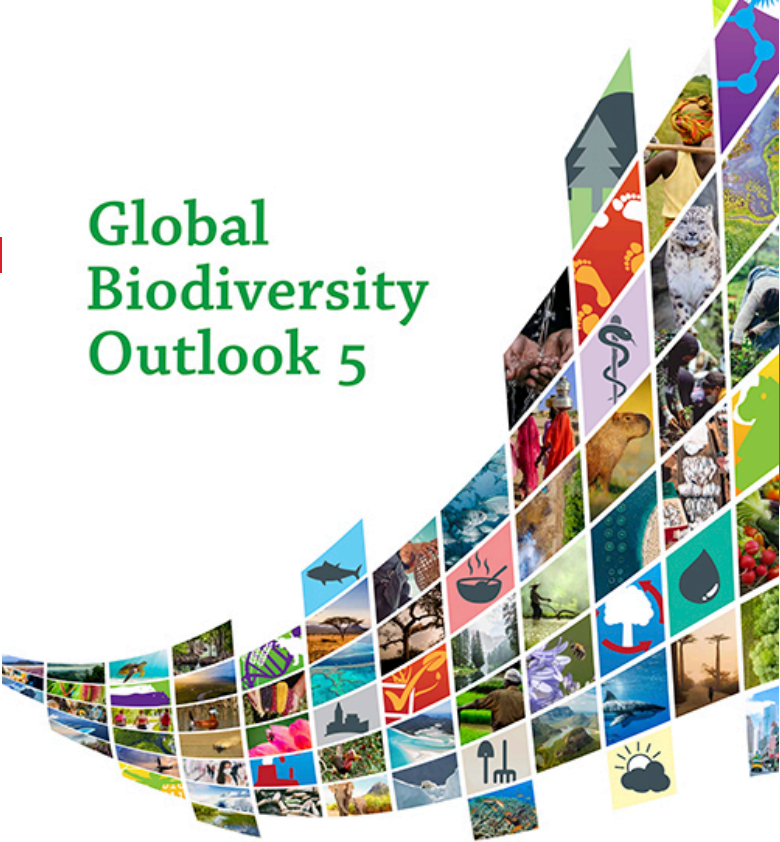
Ensure equitable and effective participation in decision-making related to biodiversity by indigenous peoples and local communities, and respect their rights over lands, territories and resources, as well as by women and girls, and youth.

An illustration on the left side of the slide shows a person's legs and feet in a white dress and sandals, walking towards the right. A yellow scroll is unrolling from the person's hand, with a yellow pen resting on it. A yellow line loops through the air above the scroll. The background is a dark blue gradient.

CBD Post-2020 GBF Proposed NEW Gender Target 22

Ensure women and girl's equitable access and benefits from conservation and sustainable use of biodiversity, as well as their informed and effective participation at all levels of policy and decision-making related to biodiversity.

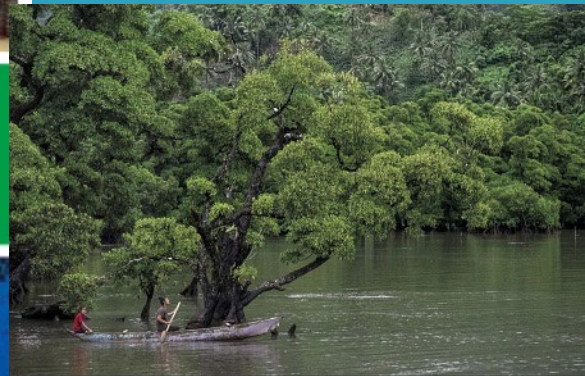
Global Biodiversity Outlook 5



LOCAL BIODIVERSITY OUTLOOKS

Indigenous Peoples' and Local Communities' Contributions to the Implementation of the Strategic Plan for Biodiversity 2011-2020

A complement to the fourth edition of the Global Biodiversity Outlook



Local Biodiversity Outlooks 2

The contributions of indigenous peoples and local communities to the implementation of the Strategic Plan for Biodiversity 2011-2020 and to renewing nature and cultures.

A complement to the fifth edition of the Global Biodiversity Outlook.

Published by Forest Peoples Programme, in collaboration with: Centre of Excellence on Indigenous and Local Knowledge, Indigenous Women's Biodiversity Network, International Indigenous Forum on Biodiversity, and Secretariat of the Convention on Biological Diversity.

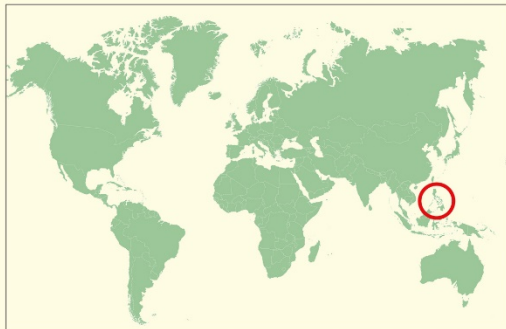


UN environment programme

Convention on Biological Diversity

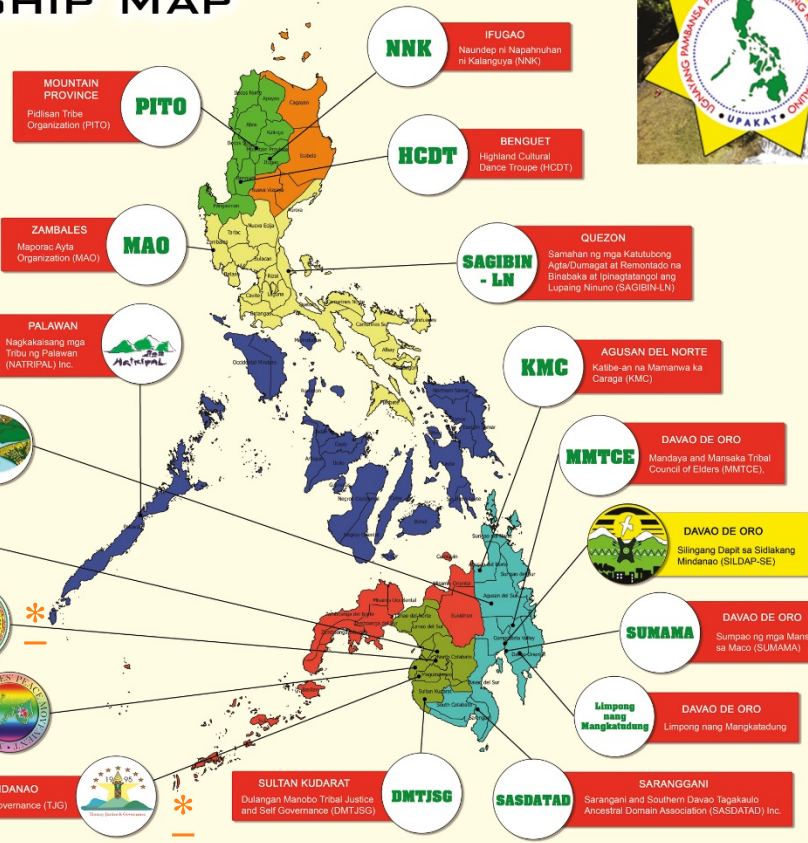
2011-2020 United Nations Decade on Biodiversity

UPAKAT PARTNERSHIP MAP



- ETHNOGRAPHIC REGION**
- CAR and Region 1
 - Region II
 - Region III and Rest of Luzon
 - Island Groups
 - Southern and Eastern Mindanao
 - Northern and Western Mindanao
 - Central Mindanao

No. of Partners: **18**



Timuay Justice and Governance

- ❑ Sulagad- traditional agricultural system of the Teduray and Lambangian peoples in Maguindanao







Erumanen ne Menuvu Kamal

- Suragad- traditional agricultural system of the Erumanen ne Menuvu in North Cotabato



Erumanen ne Menuvu Kamal

- **F**ood-**A**lways-**I**n-**T**he-**H**ome





Erumanen ne Menuvu youth in Midsayap, North Cotabato working in their suragad. by Midsayap Youth Development Council. (April 19, 2020)

https://www.choosephilippines.com/awesome-filipinos/pinoy-culture/6552/midsayap-ip-youth-continue-traditional-farming-pra?fbclid=IwAR0Y8C7OPbFyBYxa48dwTuxoZ30-KoAujaNlvDN42LY6Uvm_5v8HXYmUQJk

Manobo Lumadnong Panaghiusa

- A typical Manobo community along their traditional farms



Manobo Lumadnong Panaghiusa

- Indigenous woman showing different traditional corn varieties reproduced in Manobo traditional farms



Manobo Lumadnong Panaghiusa

Indigenous
leaders and
youth after
monitoring
traditional
farms



Silingang Dapit sa Sidlakang Mindanao

- Mansaka community in partnership with the local government unit



Recommendations



- ❑ Empower indigenous women to assert their rights to lands,, territories and resources
- ❑ Strengthen traditional agrobiodiversity practices by the provision of appropriate agricultural technologies, capital and technical assistance
- ❑ Capacity building for indigenous youth
- ❑ Active participation of indigenous women in biodiversity-related Conventions



Iyaman!!!